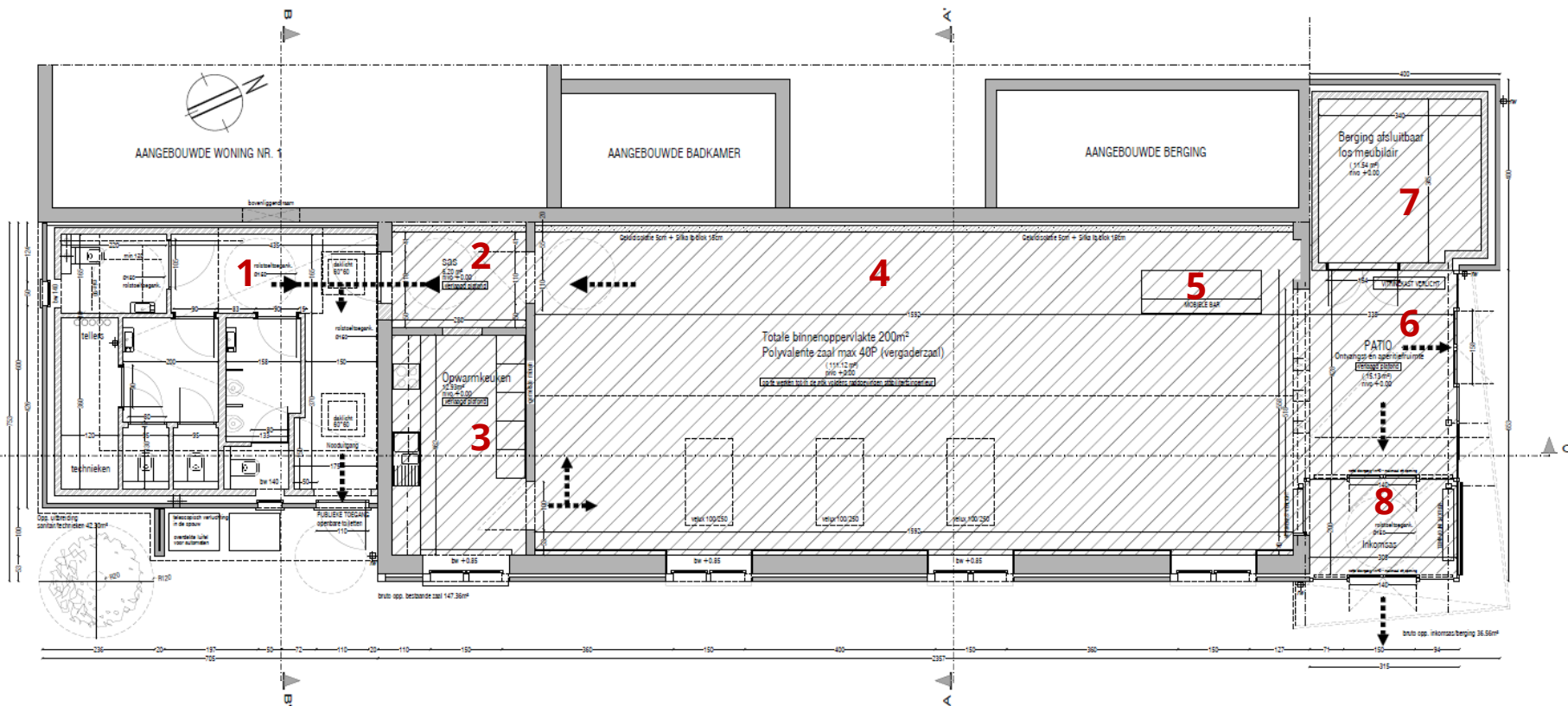




**maldegem**

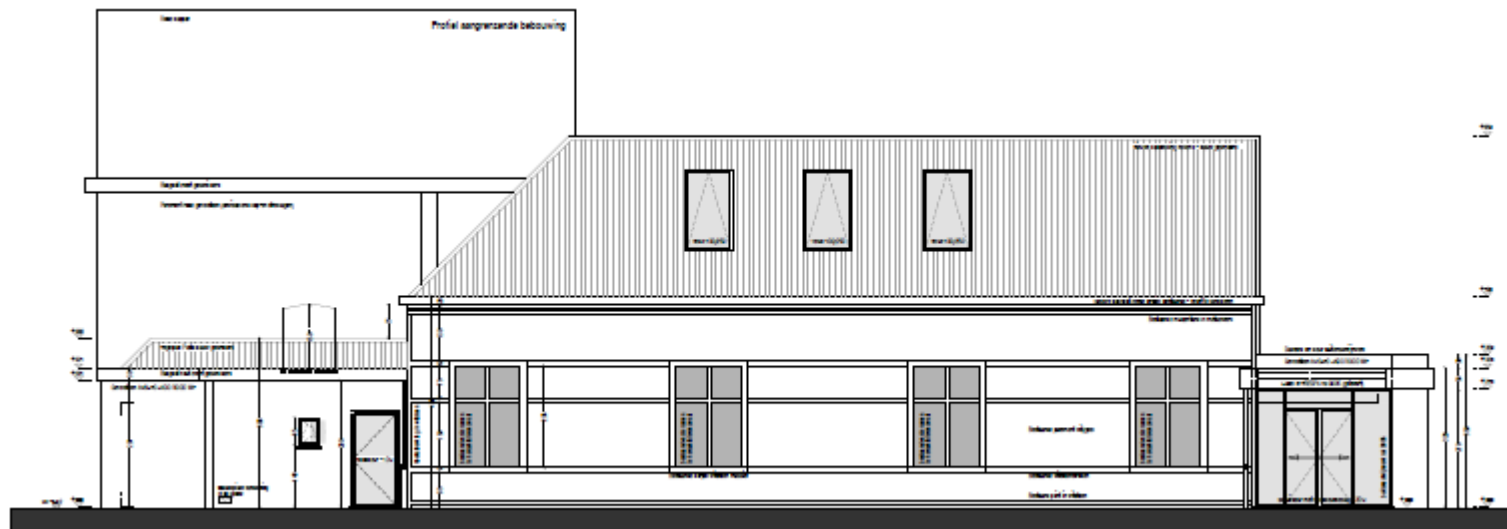
# Grondplan nieuwe toestand



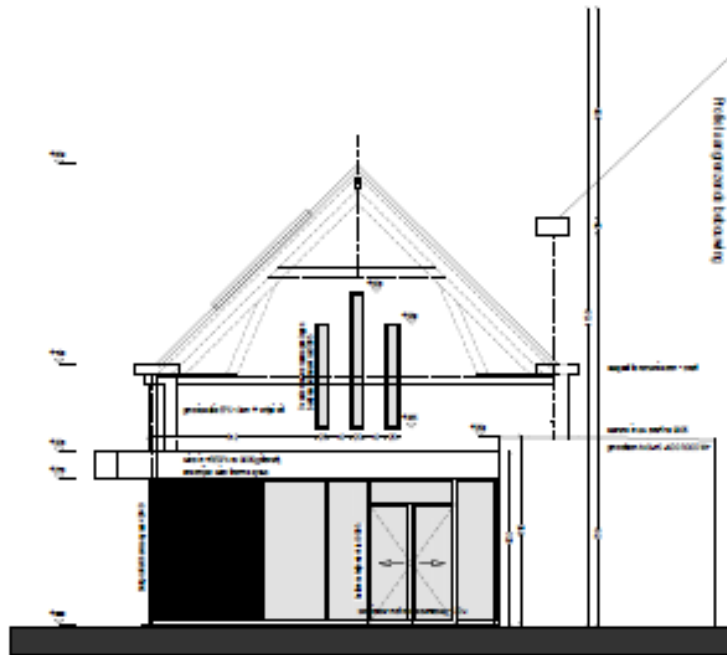
- |    |                                       |    |                             |
|----|---------------------------------------|----|-----------------------------|
| 1. | Openbare toiletten                    | 5. | Mobiële bar                 |
| 2. | SAS 6,20m <sup>2</sup>                | 6. | Patio 15,13m <sup>2</sup>   |
| 3. | Opwarmkeuken 12,93m <sup>2</sup>      | 7. | Berging 11,54m <sup>2</sup> |
| 4. | Polyvalente zaal 111,12m <sup>2</sup> | 8. | Inkomzas                    |



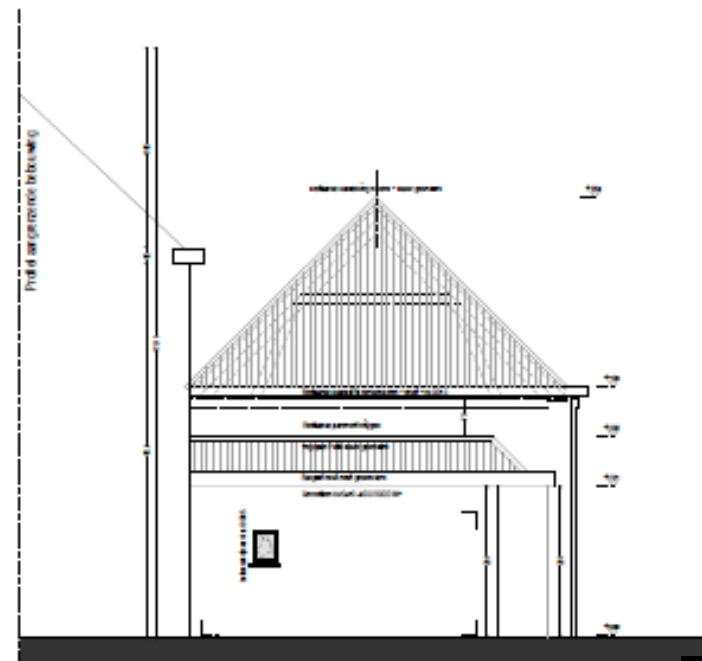
# Voorgevel nieuwe toestand



# Rechter- en linkerzijde nieuwe toestand



Rechterzijde



Linkerzijde

